

Park City's Olympic Gondola

Addressing Transit Needs - Introducing a town

Park City, currently a resort community, is a mountain town with a storied history and a traffic problem. Every year, millions of people visit Summit County to Ski, Ride, Bike or simply enjoy the beauty of our natural environment.

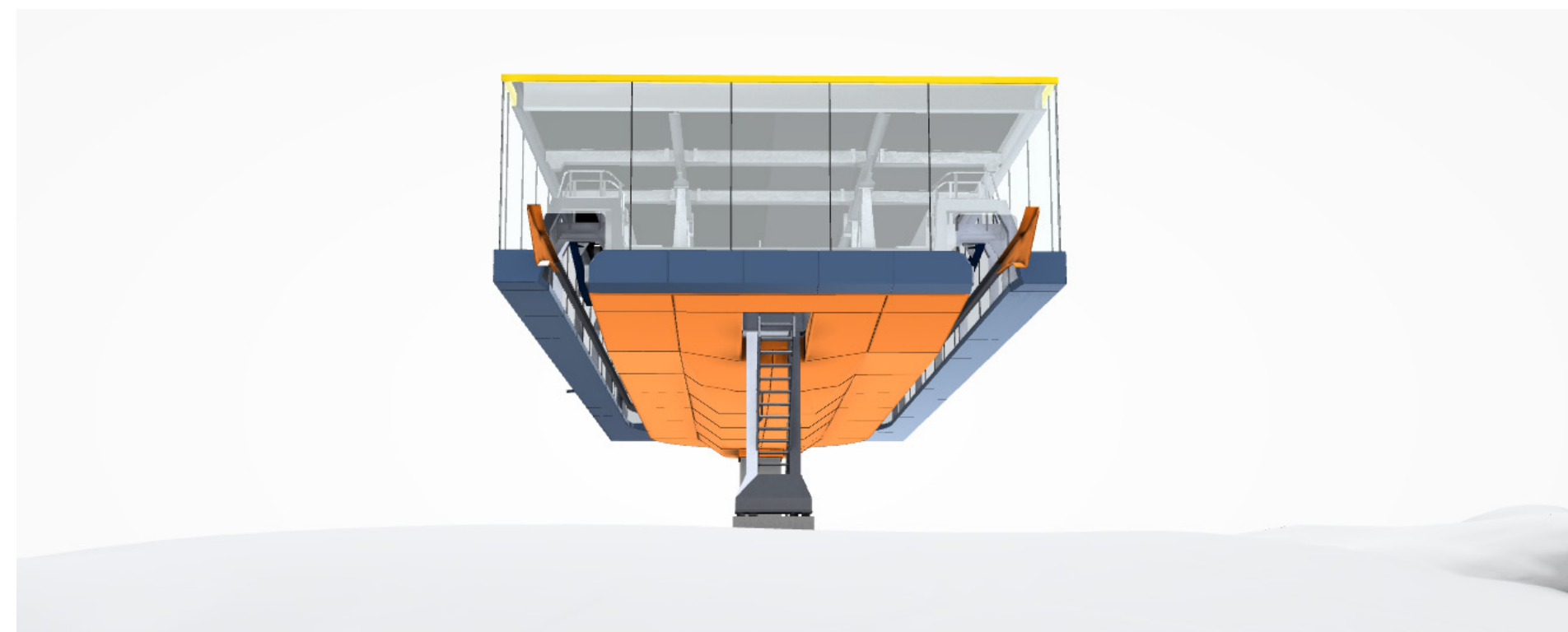
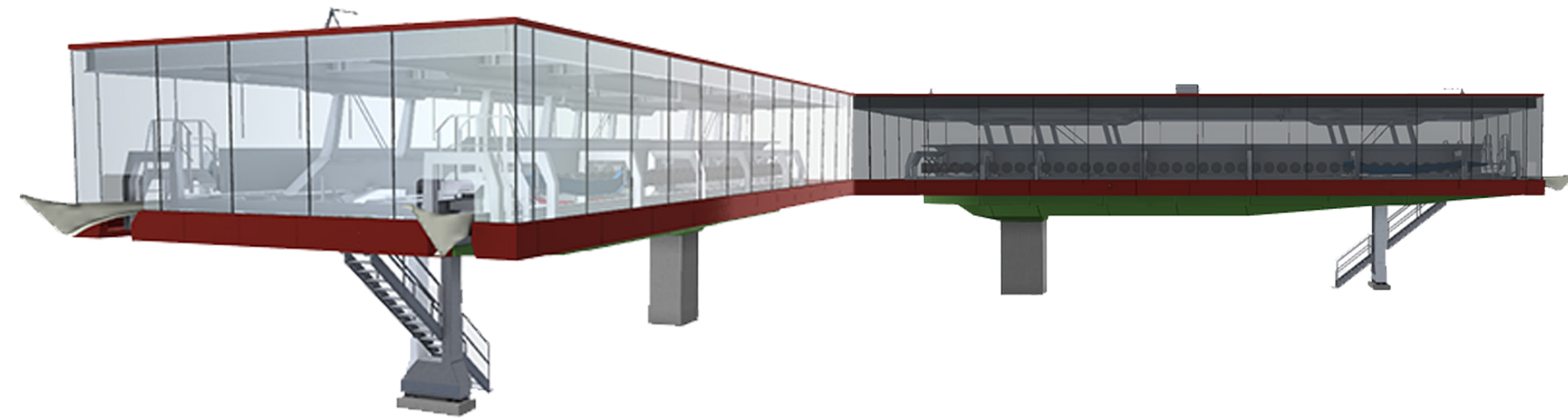
In order to get to most of the amenities that the region has to offer, visitors must exit from Interstate 80 at Kimball Junction, and travel along Highway 224 into Downtown. On busy days this leads to a nightmarish amount of traffic. Park City is also part of the Salt Lake City bid for the 2030 or 2034 Winter Olympics, which will likely make the traffic problem even worse.

Long-term, Summit County's transit plan calls for a dramatic decrease in vehicular trips along SR-224 by diverting tourists and locals to Park City's free public transit network.

While Park City's public transit system is well-funded, Kimball Junction is still very car-centric. The Park City Olympic Gondola addresses this by linking the Utah Olympic Park, the two Shopping Districts in Kimball Junction, and the existing Kimball Junction Transit hub, using the prototypical ski-town transit system: the gondola.

The Park City Tech Center mid-station connects a newly-constructed mixed-use development to the transit-center, Redstone Shopping Center, and the Olympic Park (especially notable given the Tech Center's potential use as an Olympic Village).

This midstation is painted green and-red-brown, suggesting the year-round beauty of Park City's mountainous environment.



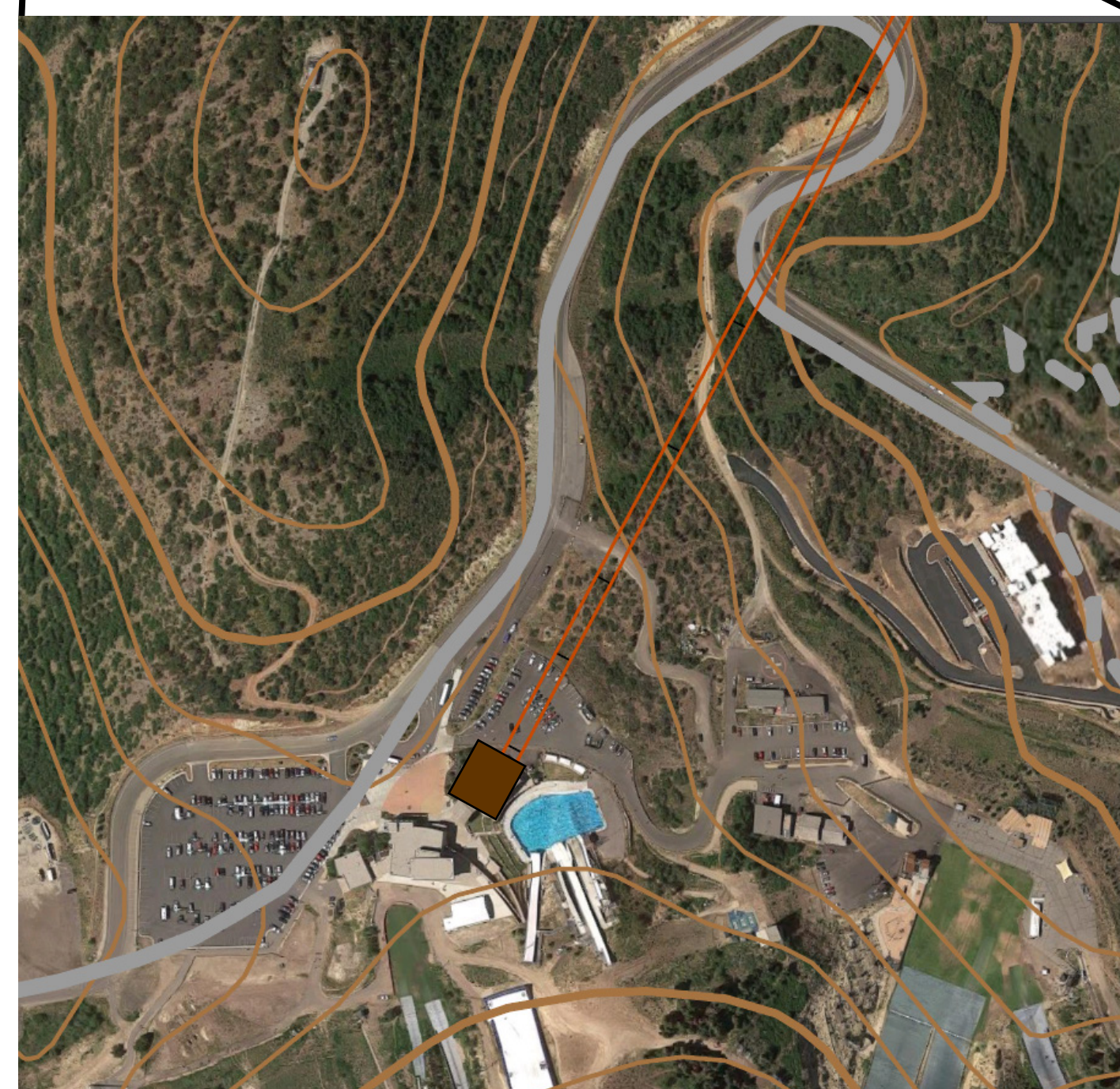
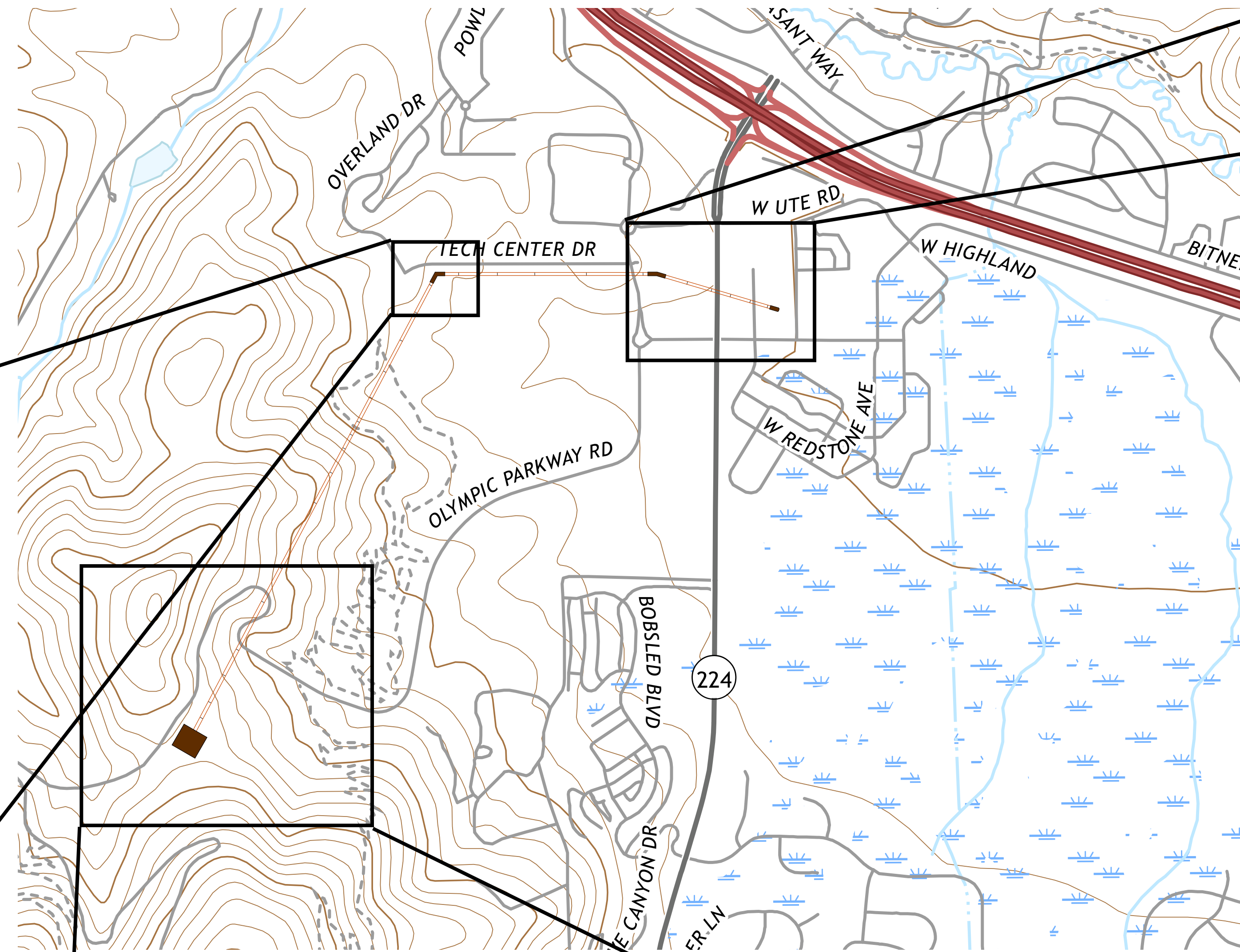
The western terminus of the Park City Olympic Gondola is located on the second floor of the newly rebuilt day lodge at the Utah Olympic Park (not pictured).

The station pays tribute to the Olympic heritage--and future--of Park City by displaying proudly the colors of the 2002 Salt Lake Winter Olympics.

Inspired by Park City's Mining Past, the transit center station, which will serve as the main access point to the bath, uses shades of silver, black and coppery brown.

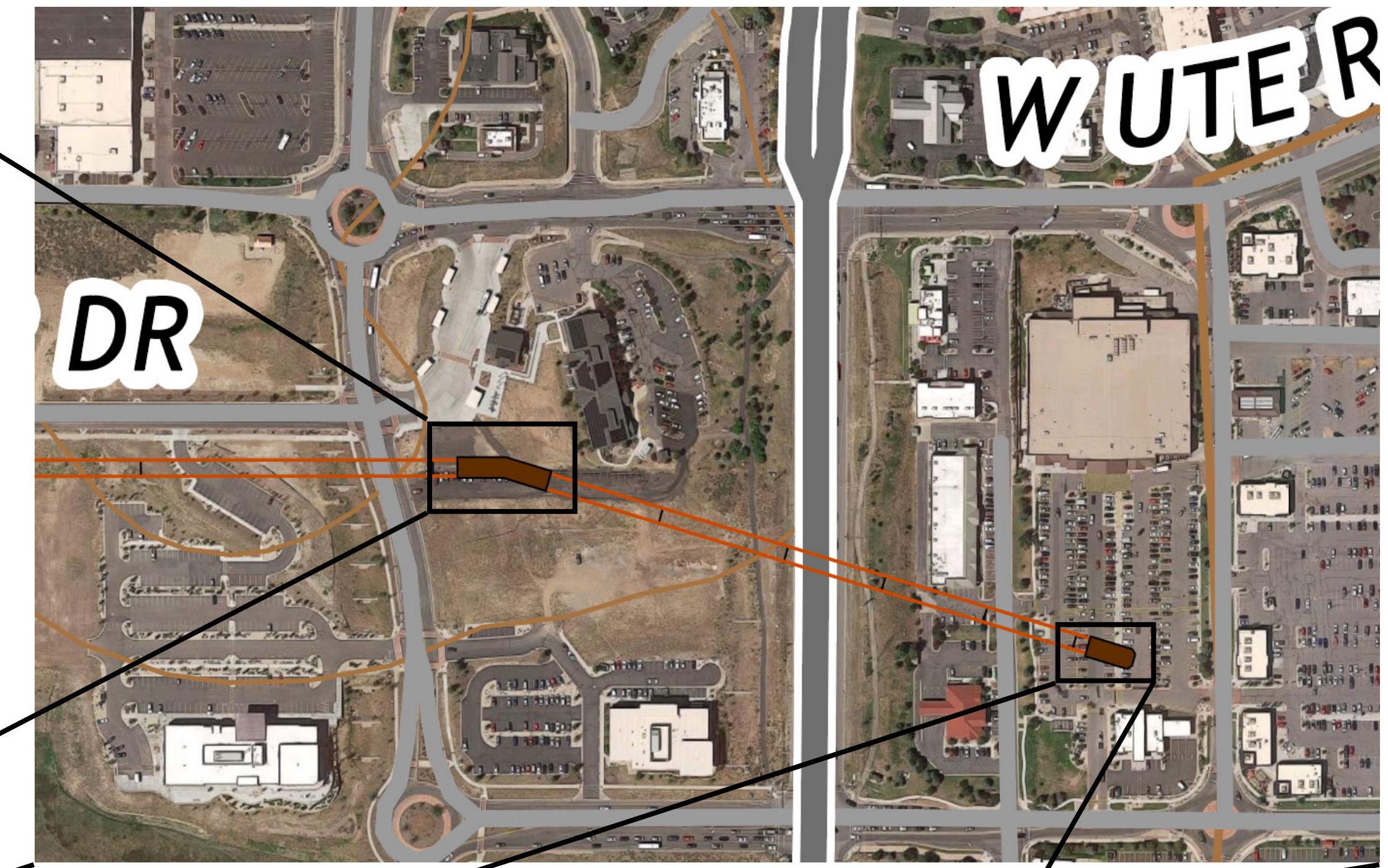
The gondola is accessed from the first floor of the existing transit center via a partially underground tunnel lined with historic artifacts.

The underground section of the tunnel gestures towards a mining branch, while the overground is encased in a transparent bubble, suggesting the 'magic carpet'-style beginner ski lift.



The 10-Person gondola cabins allow for panoramic views of the surrounding mountains, reinforcing that all the history represented by each gondola stage took place among these peaks.

The usual color of the gondola is a deep, pearly blue but some cabins will incorporate unique designs by local artists.



The Redstone Gondola Station is the eastern terminus of the gondola, and provides access to the existing Redstone and Newpark Shopping centers.

As this station is expected to receive heavy use by locals, the design connects the local with the global by using a color scheme which suggests the Sundance film festival, which brings much of the entertainment world to Park City every february.

The edge of the station incorporates a large informational display, which can provide updates on local weather, traffic and community conditions.

